

Washtenaw Success by 6[®]

May 2009 Update

This update is dedicated to recognizing and thanking our funders and volunteers. Without both, we would be unable to even begin to meet the community needs around young children and their families. The work of Washtenaw Success by 6[®] is only made possible by the combination of the financial support of the partners highlighted in this update, and the hard work of many, many volunteers - from professionals working in the early childhood field, to parents, to high school and college volunteers.

In the past year, Washtenaw Success by 6 has received over \$900,000 from the partners and contributors listed below - by far the majority of the money goes directly into services designed to support families and young children in our community. Over the past twelve months, Washtenaw Success by 6[®] has also been the recipient of over 3700 hours of volunteer support and work, a value of \$73,000 using the standard value of a volunteer hour!

This is an incredible commitment to the children of Washtenaw County - your participation in this work is deeply appreciated - thank you for all you do to support us!

Ann Arbor Area Community Foundation • Chrysler Foundation • IHA Cares Foundation • James A and Faith Knight Foundation • Michigan Early Childhood Investment Corporation • Pfizer Legacy Grant • The Rotary Club of Ann Arbor • United Way of Washtenaw County • Washtenaw County Health Department • Washtenaw County Government • Washtenaw Intermediate School District • Individuals and organizations who designated donations through the United Way Campaign

May Leadership Commission Meeting

Monday, May 11th, 2009

8:00—9:30 am

Washtenaw United Way—2305 Platt in Ann Arbor



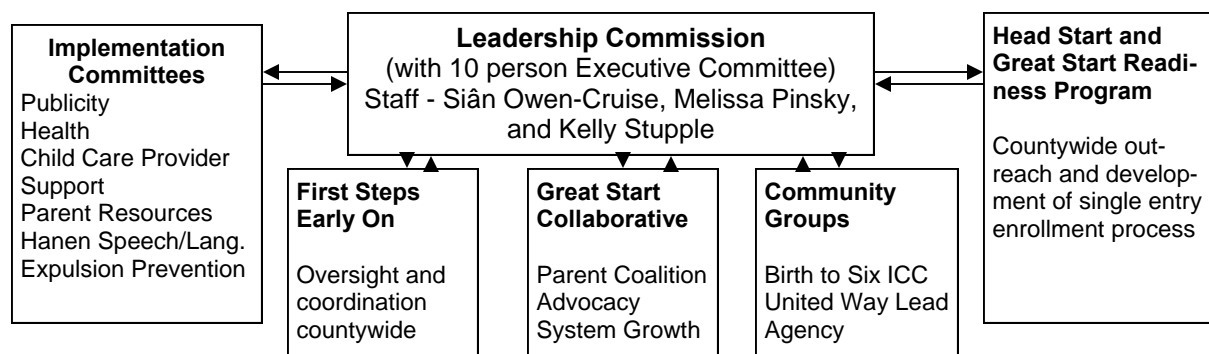
Supported Programs: Progress and Development

Volunteers - Making our work possible!

Washtenaw Success by 6[®] depends on a strong volunteer base to achieve our work. Our structure is centered on these volunteers: from the Leadership Commission; to the individuals working in each committee to plan and implement our community priorities; to the college and high school students who make packets, distribute information, and help every week in the office. We appreciate all of the work that is accomplished through the hard work of over 100 volunteers - thank you for all you do!

Our Structure

Just a quick reminder of our structure, and how the various parts of our work are related:

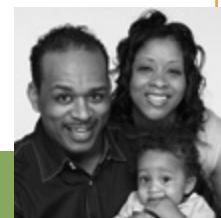


Parent Network

During the 2008-09 school year the Washtenaw Success by 6[®] Parent Network has really taken off! Funded by a combination of support from the **United Way of Washtenaw County, The Rotary Club of Ann Arbor**, and the **WISD Great Parents/Great Start Grant**, this outreach to parents throughout the county offers age appropriate parenting packets throughout the first six years of life, bi-monthly newsletters highlighting parenting skills, and local community events for young children. Membership in the network has been growing month by month since the public launch in October and now numbers over 500 families throughout the county. Outreach is taking place through First Steps Washtenaw, our collaborating agencies, and St. Joseph Hospital, where 250 new parents receive information every month.

Children's Health Insurance Advocate

The **County Health Department (Washtenaw County Government)** and **United Way of Washtenaw County** funded Children's Health Insurance Advocate, Kelly Stupple, has now been with Washtenaw Success by 6[®] for one year. In that time, she has had a significant impact on the community: reaching out to families experiencing difficulty securing Medicaid, MiChild, or Washtenaw Health Plan insurance; helping alert parents to necessary re-enrollment steps and requirements; and conducting a great deal of early childhood health related outreach throughout the county.



Pfizer Legacy Grant Program

In January of 2009, Washtenaw Success by 6[®] was honored to be chosen by the **Ann Arbor Area Community Foundation** as a recipient of a **Pfizer Legacy Grant**. This grant is to provide additional training and support for childcare providers throughout the county. There will be four main directions of the training: developing speech and language skills; responding well to challenging behaviors; early identification and referral of children with developmental concerns; and increasing cultural competency within childcare centers. We are currently in a planning and preparation period with this grant and full implementation will take place in the 2009-10 school year.

First Steps Washtenaw

The county-wide First Steps Program continues to serve families with home visits, play groups, parent education, developmental screenings and, when appropriate, referrals to Early On for additional development services. Supported by the **Intermediate School District**, the **United Way of Washtenaw County**, **Washtenaw County Government**, the **Rotary Club of Ann Arbor**, the **Chrysler Foundation** and the individual school districts, the First Steps programs serve over 2000 families a month, complete over 4000 home visits a year, and screen all those children for possible developmental delays.

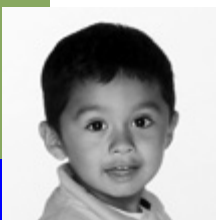
First Steps Washtenaw Outreach

Thanks to a grant from the **Ann Arbor Area Community Foundation**, this year seven First Steps programs around the county received funds to support outreach beyond the schools. Playgroups and parent education events are taking place in doctors' offices, community centers, and other service agencies. In Ypsilanti, a parenting class is being held in the Michigan Works! Center on Harriet Street. Each class offers support for parenting with a focus on speech and language and pre-literacy skills. Participants are encouraged to bring their children to playgroups and when appropriate are referred to Early On. Participants in both the parent education and playgroups earn credit toward their required weekly activities.

Physician Outreach and Education

Physicians around the county have a key role to play in the early identification and referral of young children with developmental concerns. However, they are often unsure of how to effectively access the system and support their patients. With the support of the **IHA Cares Foundation** and the **James A. and Faith Knight Foundation**, we have been conducting physician office visits, mailings information packets, presenting at physician meetings and "grand rounds" and individually supporting physicians around the county.

Washtenaw County Great Start Collaborative



In April of 2008, Washtenaw Success by 6[®] became part of the state-wide Great Start Collaborative system. With the support of the **Early Childhood Investment Corporation**, we have been able to strengthen the Leadership Commission, increase our outreach and advocacy on behalf of young children and their families, create a Parent Coalition, and revise and update our website, with a focus on providing resources and support to parents and childcare providers. In addition to our local capacity building we are also now connected to a state-wide support system, with a focus on advocacy and system development.

Other Programs and Activities

The programs focused on over the past few pages are our larger and direct fund supported activities. However Washtenaw Success by 6[®] also provides:

- Free childcare training for providers for low-income children
- Community trainings and events around parenting, health and developmental delay
- Coordinated community-wide outreach and enrollment support for Head Start and the Great Start School Readiness Programs
- Coordination of the United Way fund distribution for the Early Childhood Care and Education Area
- Coordination of Early On Services county-wide
- Maintenance of an Early Childhood Resource Directory, available through our website
- Coordination of the County-wide Interagency Coordinating Council - Washtenaw Birth to Six
- Advocacy on behalf of our children and families at the local and state level

Staff Members - Who to Call

The daily work of Washtenaw Success by 6[®] is carried out by the staff. Please feel free to contact them with any questions or ideas:

Siân Owen-Cruise:

Director of Washtenaw Success by 6[®]

734-994-8100, ext 1277 -

sowencruise@uwwashtenaw.org

Melissa Pinsky:

Co-Director of the Great Start Collaborative

734-994-8100, ext 2177 -

mpinsky@uwwashtenaw.org

Kelly Stupple:

Children's Health Insurance Advocate

734-544-3079 - stupplek@ewashtenaw.org

Donna Lasinski:

Parent Liaison for the Parent Coalition

734-994-8100, ext 2177 - lasinski@mac.com

**Our website has resources for
parents and children
throughout Washtenaw County**

www.washtenawsuccessby6.org

Leadership Commission Members

Direction and oversight of Washtenaw Success by 6[®] is provided by our strong Leadership Commission - who are all committed to ensuring the success of the youngest children in Washtenaw County - they are:

Leadership:

Martha Darling - Community Volunteer

Mark Ouimet - County Commissioner

David Rutledge - WCC Board Member

Members:

Anya Abramzon

Chris Aris

Jesse Bernstein

Elaine Brady

Pam Byrnes

Robert Chapman

Ellen Clement

Constance Colthorp

Mindy Costello

April Davis

Julie DuChateau

Joseph Dulin

L. Edwards-Brown

Cheryl Elliott

Mark Foster

Bryan Girbach

Robert Guenzel

Holly Heaviland

Norman Herbert

Sandra Hilton

P. Horne-McGee

Marj Hyde

Angie Juarez

Diane Keller

Donna Lasinski

Shannon Luhrs

Jennie McAlpine

Susan Miller

William Miller

Josie Parker

Katie Prall

Todd Roberts

Sandra Rupp

Donna Sabourin

Steven Sheldon

Clay Shouse

Pam Smith

Nancy Thelen

Cynthia Travis

Larry Voight

Patricia Warner

Althea Wilson

Jewish Family Services

EMU Children's Institute

Ann Arbor Chamber

Parent Member

Michigan House of Rep.

United Bank and Trust

Washtenaw Public Health

Parent Member

Parent Member

Parent Member

Parent Member

Roberto Clemente

Juvenile Court

Ann Arbor Area Comm. F.

Rotary Club of Ann Arbor

Milan Area Schools

Washtenaw County Gov.

Junior League of A.A.

Community Volunteer

Perry Nursery School

Washtenaw Head St.

First Steps Ann Arbor

Parent Member

Ypsilanti Chamber

Parent Coalition Chair

Parent Member

UM Work/Life Program

Community Volunteer

Washtenaw ISD

Ann Arbor District Library

Parent Member

Ann Arbor Public Schools

United Way of Washtenaw

Community Support/Treat.

Community Health

High/Scope Foundation

Child Care Network

MSU Extension

Washtenaw DHS

Catholic Social Services

UM Mott Hospital

Parent Member